



## Special Interest Articles:

- Suzuki Camp at Altelekker.
- Annual Suzuki Concert.

## Individual Highlights:

Teachers Trainer	
Course	2
T-shirt & Key rings	2
Suzuki Method in a Nutshell	2
Constantly Modernising	3
Upcoming Events	4
Membership	4

## South African Suzuki Association

### Suzuki Camp at Altelekker

This year, the annual SASA camp was held at Altelekker from 7 – 9 August. This time around, we were delighted to have three international Teacher Trainers work with the children at the camp. A big thank you to Christophe Bossuat (France), Karen Kimmett (Canada) and Martin Rüttimann (Switzerland) sacrificing their time to spend with our children. Not only did we receive excellent tuition from them, but we were also joined by Stieneke and

Godelieve from Holland. She taught the children some Gypsy music which was performed at the camp concert and at the Annual SASA concert.

The highlight of the camp was the concert on Monday afternoon. We had to show off all the hard work done during the camp. Well done to the orchestra, directed by Christophe, for their performance of *Insimbi za se Goli* and *We Mbiba*. Well done also to all the children that worked so hard!

Another highlight was the impromptu performance of an African song, which included violins, singing, dancing, drums and mandolin.

Every child had a fine time at the camp. The Kingdom Life children especially enjoyed the food-no cabbage and no spinach!

If you missed the camp this year, be sure to be there next year. The Altelekker camp is a sure recipe to improve playing while having loads of fun.

### Annual Suzuki Concert

The annual SASA concert, held at the Miriam Makeba Hall at UNISA, followed about a week after the camp on 14 August 2010. As camp attendance was a prerequisite for participating in the annual concert, everybody was well prepared and the concert was a great success. Once again, this was an opportunity to showcase what the children had accomplished up till so far. It also gave each child - from the smallest pre-twinkler to our senior students an opportunity to perform in a non-threatening environment.

This was truly an international concert as we were joined by the family. We also had the opportunity to play the 'Dutch Twinkle'.

A BIG thank you to Anne and her team for arranging

this event, and also to all the teachers leading in the concert and assisting back stage. For all the parents that offered their assistance, we appreciate your efforts.



## Teacher Training Course

SASA arranges Teacher's Trainer Courses three times a year, in order for teachers to be trained in the Suzuki method and philosophy. As a result of the volcano earlier this year, our first course only took place between 1-5 August with the exams and assessment on 6 August.

Our international trainers, namely Christophe Bossuat (France), Karen Kimmett (Canada) and Martin

Rüttimann (Switzerland), really deliver a high standard of teaching and make sure that trainees also develop not only in their teaching, but also in their playing skills.

Congratulations to those who passed their exams and happy practising to each one preparing for the next level. We are looking forward to the next session in December.

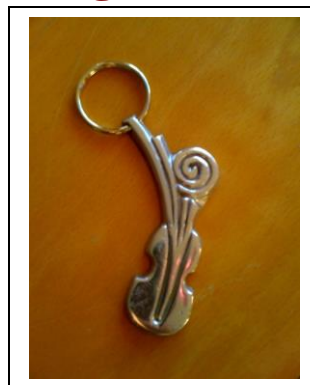
---

*"When love is deep much  
can be accomplished."*  
Shinichi Suzuki

## T-Shirts and Key Ring

We have had a special key ring made to celebrate the 10th Anniversary of the SASA. It will be on sale at all our functions for R60.00. It is handmade out of aluminum by Southern African craftsmen and is very light.

We have a few additional T-shirts available so please contact Anne Naylor if you are interested.



## Suzuki Method in a Nutshell

Mastering the violin is an enormous challenge. The Suzuki Violin Method helps children to play the violin by engaging them in playful and joyful learning. They start by playing real music right from the beginning with "Twinkle, twinkle" and pass through a series of pieces of increasing complexity that build on each other, including the

Vivaldi violin concertos and the concerto for two violins by Bach. Playing well doesn't come without practice.

In Dr. Suzuki's words, "To make a resolution and act accordingly is to live with hope. There may be difficulties and hardships, but not disappointment or despair if you follow the

path steadily. Do not hurry. This is a fundamental rule. If you hurry and collapse or tumble down, nothing is achieved. Do not rest in your efforts; this is another fundamental rule. Without stopping, without haste, carefully taking a step at a time forward will surely get you there."



## Constantly Modernising

Anne Naylor writes:

I was privileged to attend the European Suzuki Association's conference from 17<sup>th</sup> to 19<sup>th</sup> September 2010 at the Newnham College in Cambridge, UK. The theme was: *Constantly modernising whilst respecting our legacy.*

The key note lectures were given by Mrs Fumiyo Kuramochi, a Japanese lady who had worked with Dr Suzuki. She showed us our legacy by discussing all the publication that Dr Suzuki wrote while developing his method and philosophy. We also were privileged to hear recordings of Dr Suzuki's favourite violinists, Fritz Kreisler and Gerges Enescu amongst others. This power point lecture was given by

Prof Harmut Lindemann who has been collecting these old recordings all his life.

As for modernising... we had many lectures of which I attended an introduction to 'Early Childhood education' which addresses the education of the child from birth to age 3 or 4 in the true Suzuki style; 'Music Mind Games' presented by Michiko Yurko which is a modern way of teaching music notation and theory and 'Recital Training', an audio visual presentation for Book 4 students.

Lastly, the other key note speaker was Benjamin Zander, the conductor of the Boston Philharmonic Orchestra and communicator who gave a rousing talk based on his famous book 'The Art of Possibility'. This was a truly

modern presentation outlining the fact that

*'You are more likely to be successful, overall, if you participate joyfully with projects and goals and do not think your life depends on achieving the mark... Resources are likely to come to you in greater abundance when you are generous and inclusive and engage people in your passion for life.'*

Pg 21 'The Art of Possibility'

This same idea was put forward by Koen Rens, the Chairman of the ESA, in his opening address when he asked that all teachers become fully involved in their National Suzuki Association so that they can feel part of this amazing network of teachers, parents and children know as the 'Suzuki Method'.

## Suzuki Saturday in Durban

Here is the photo from the newspaper about the Suzuki Saturday that we held at Durban Girls College on 24 July 2010. These are the pupils of Louise Howell. There were 18 girls there and we played the repertoire of the concert and also taught them a Fiddle piece called Mississippi Sawyer. Ansa Steenkamp and Anne Naylor also talked to the parents on the topics 'What is the Suzuki Method?' and 'Painless Practise' and Group Lessons. It was a great success and was very much enjoyed by all!





**SASA**

SASA Chair Person  
Anne Naylor

Phone:  
072 203 1515

E-mail:  
suzuki.association.sa  
@gmail.com

---

We're on the Web!

*See us at:*

**[www.musicstraw.com](http://www.musicstraw.com)**

---

## Upcoming Events

**16 October 2010**

Teachers' Meeting @  
Anne's house

**13 - 17 December 2010**

Teachers' Trainer Course @  
Altelekker Youth Camp

Contact Anne Naylor for  
more information

## Membership

We want to thank the members of the South African Suzuki Association for your continued support. If you have not paid your annual membership fee, please do so by internet transfer. Please request a membership form from your teacher.

The Association is open to all Suzuki teachers and parents who receive tuition from a qualified Suzuki Teacher.

Family Membership fees are only R90 per family and it enables families to take part in all the events arranged by SASA.

### **SASA BANKING DETAILS:**

**NAME:** SASA

**BANK:** Standard Bank

**BRANCH:** Menlyn Park

**ACCOUNT NUMBER:**

424 324 806

**REFERENCE:** Your name  
& membership